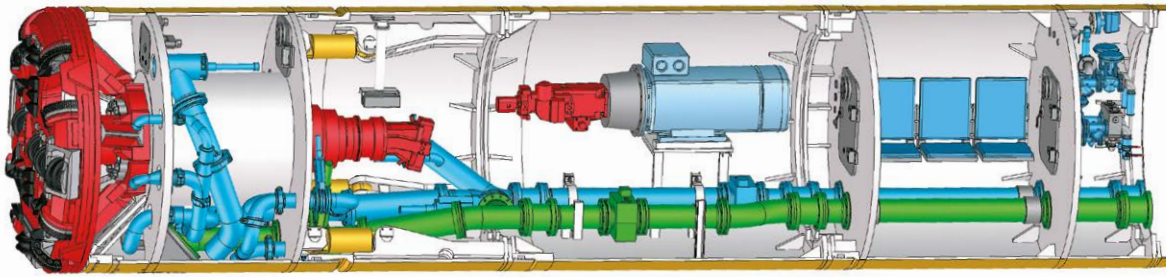


AVND1600AB – AVND2200AB

PIPE JACKING



Special Features

- › Mixshield-mode for inhomogeneous soil conditions or low coverage
- › Alternatively: conventional Slurry-mode
- › Designed for soft ground, mixed ground and hard rock conditions by use of different cutting wheels (full face excavation)
- › Access to cutting wheel for tool replacement (backloading system)
- › Highly reliable steering operation due to inductive measuring system
- › Different (variable) flushing modes/jet systems to suit different ground conditions
- › Medium pressure water system for operation in cohesive soil
- › Providing highly effective cone crusher
- › Equipped with heavy duty long-life main bearing and high torque central drive
- › Hydraulic power pack in machine can
- › Completely remote-controlled
- › All machines compatible with TUnIS MT Navigation System

TECHNICAL DATA	AVND1600AB		AVND1800AB		AVND2000AB		AVND2200AB	
	Std*	Ext*	Std	Ext	Std	Ext	Std	Ext
1. Articulated Shield								
› Outer diameter (mm)	1,970	2,150	2,150	2,425	2,425	3,025	2,725	3,025
› Pipe OD (mm)	1,940	2,120	2,120	2,400	2,400	3,000	2,700	3,000
› Pipe ID (mm)	1,600	1,800	1,800	2,000	2,000	2,400	2,200	2,400
Main Drive								
› Max. torque	360 kNm		520 kNm		780 kNm		7800 kNm	
› Revolution (LH/RH)	0–4.6 rpm		0–4.6 rpm		0–8.4 rpm		0–8.4 rpm	
› Rated power	110 kW		160 kW		315 kW		315 kW	
› Roll correction	x		x		x		x	
Steering								
› Steering cylinders	4		4		4		4	
› Force per cyl./oil pressure	844 kN/420 bar		844 kN/420 bar		1,068 kN/420 bar		1,068 kN/420 bar	
› Stroke per cylinder	100 mm		100 mm		100 mm		100 mm	
Control								
› Computer data logging system	x		x		x		x	
› Fuzzy control (automatic steering)	opt.		opt.		opt.		opt.	
› Fully visualized process control	x		x		x		x	
› Active roll protection (el.-hydr.)	x		x		x		x	
› Suitability TUnIS MT Navigation System:								
› Laser	x		x		x		x	
› HydroLevel	x		x		x		x	
› Gyro	x		x		x		x	
› LaserTotalStation	x		x		x		x	
2. Machine Can								
› Lubrication system	x		x		x		x	
3. General Information								
› Pipe Jacking	x		x		x		x	
› Drive length (recommended)	700 m		900 m		1,100 m		1,100 m	
› Access to cutting wheel	x		x		x		x	
› Waterproofness	3 bar		3 bar		3 bar		3 bar	
› Airlock	opt.		opt.		opt.		opt.	
› Telescopic and interjacking station	opt.		opt.		opt.		opt.	
› Slurry line diam.	150 mm		150 mm		200 mm		200 mm	
› Medium pressure jet system	x		x		x		x	

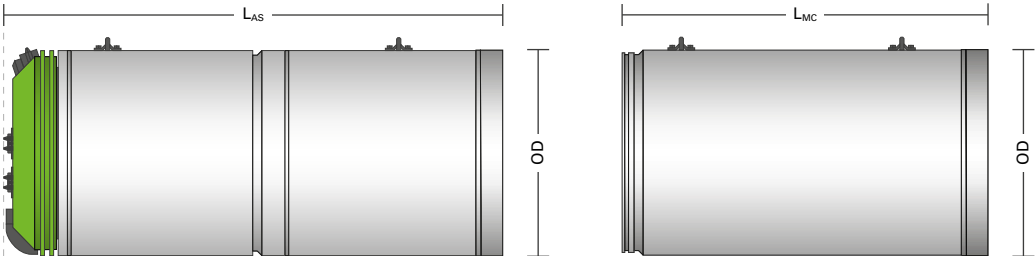
* Std = standard; Ext = extension kit

**PIONEERING
UNDERGROUND
TECHNOLOGIES**



Machine dimensions

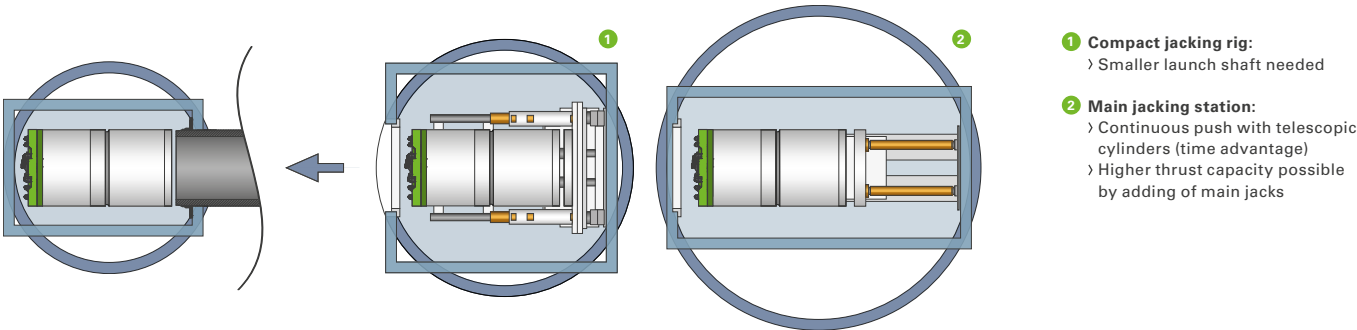
TECHNICAL DATA	AVND1600AB	AVND1800AB	AVND2000AB	AVND2200AB
› Outer diameter (OD)	1,970 mm	2,150 mm	2,425 mm	2,725 mm
› Length artic. shield (L _{AS})	4,200 mm	4,400 mm	4,700 mm	4,800 mm
› Length machine can (L _{MC})	3,200 mm	3,200 mm	3,200 mm	3,200 mm
› Max. single weight	24,000 kg	27,000 kg	38,000 kg	42,000 kg



Shaft dimensions

TECHNICAL DATA		AVND1600AB	AVND1800AB	AVND2000AB	AVND2200AB
Launch Shaft	Pipe length	Shaft size	Shaft size	Shaft size	Shaft size
› Compact jacking rig	3,000 mm	Ø = 7.0 m	Ø = 7.5 m	Ø = 7.5 m	–
		6.5 m × 4.5 m	7.0 m × 4.5 m	7.0 m × 5.0 m	–
Launch Shaft	3,000 mm	Ø = 9.0 m	Ø = 9.5 m	Ø = 9.5 m	Ø = 10.0 m
› Main jacking station		8.5 m × 4.0 m	9.0 m × 4.0 m	9.5 m × 4.5 m	9.5 m × 5.0 m
Reception Shaft (L _{AS})		4,200 mm	4,400 mm	4,700 mm	4,800 mm
› Circular		Ø = 5.5 m	Ø = 5.5 m	Ø = 6.0 m	Ø = 6.5 m
› Rectangular		5.0 m × 3.0 m	5.0 m × 3.0 m	5.5 m × 3.5 m	5.5 m × 4.0 m

All dimensions according to 15m shaft depth.



Machine type description e.g. AVN¹⁾ 1600²⁾ A³⁾ B⁴⁾

- 1) Machine type
- 2) ID of jacking pipe
- 3) Access to cutting wheel
 - X = no access
 - T = central door
 - A = door above main drive or in top of pressure wall
- 4) Type of container, power transfer from container to machine
 - B = electric cable to machine, power pack in machine power pack in machine
 - C = hydraulic drive from container directly into machine
 - E = electric cable from container directly into machine
 - H = medium voltage supply to machine (> 1000V)

All rights reserved. Any information contained herein is for informational purposes only. Subject to change without notice. We are not responsible for typographical errors. All dimensions and data refer to customizable basic product features.

HERRENKNECHT AG
77963 Schwanau
Germany
Phone +49 7824 302-0
Fax +49 7824 302-3640
utility@herrenknecht.com
www.herrenknecht.com

